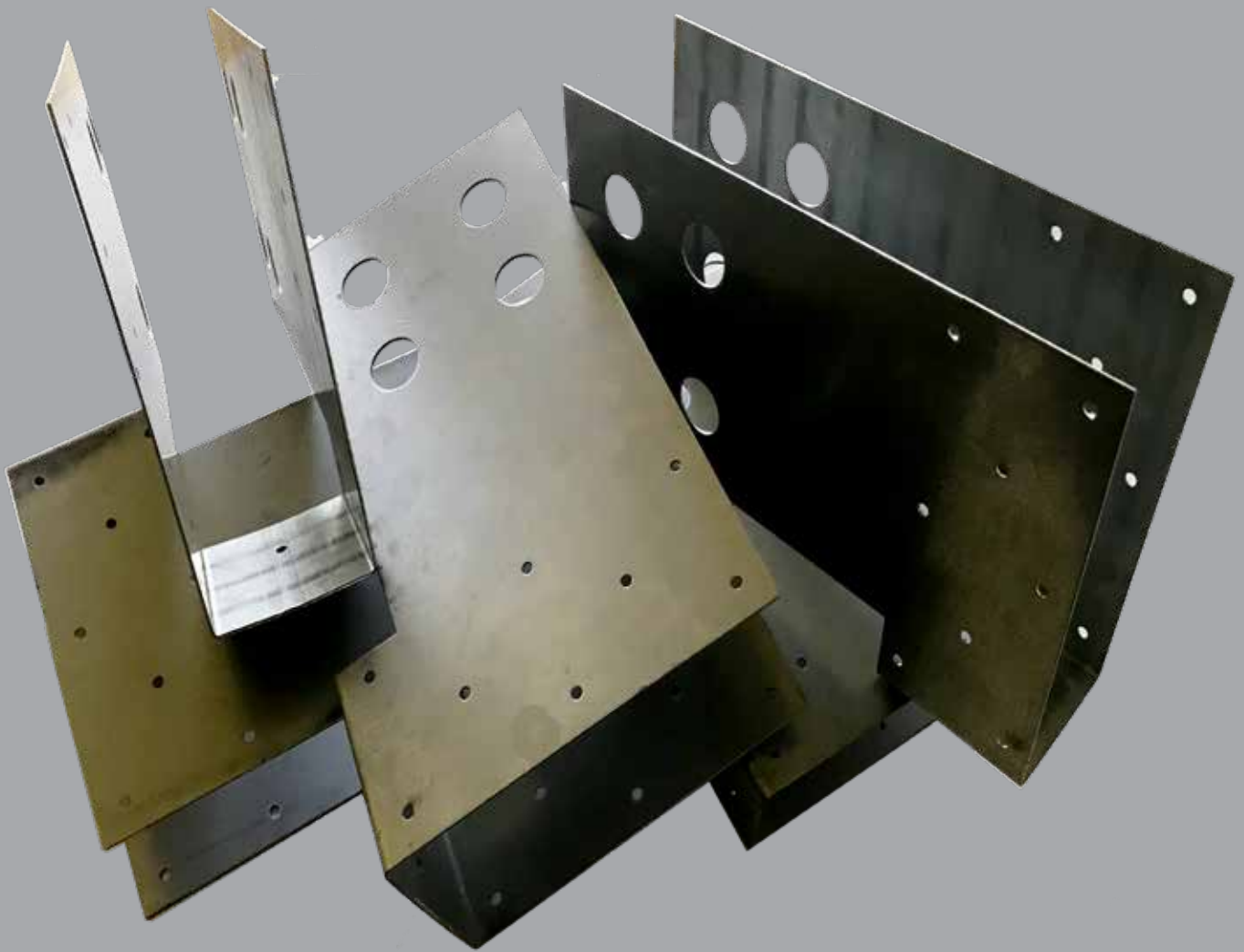



RP Watkins

RP WATKINS PRODUCT CATALOG - 2019



Blgsumm Publishing
2019



PRODUCTS

The Original Watkins Hanger
Family

The One Ledge Family

The One Plate Family

IFH28 Series page 4-5

IFH25 Series page 6-7

IFH48 Series page 8-9

OneLedge Series Page 10-11

CONTACT

405-664-0010

michael@watkinshanger.com

All rights reserved C 2019



Over 30 years ago, founding partner Bob Watkins created and patented the Original Watkins Hanger. Servicing the ICF community back then while being a contractor himself, the orders took about 4 weeks or so to arrive.

I was his client, an ICF contractor in the Midwest and one day I called to place my order and he told me that he was going to close up shop and retire. His "manufacturing had skyrocketed and he just didn't think he wanted to continue" said he.

I begged him for his drawings and offered to find him a better situation. After a bit, I was able to get him some competitive pricing from a local supplier and put the two together and said, "Can I place my order now"? We both laughed.

A few days later Bob contacted me and offered me a partnership. "You could have stolen those drawings," he said. "Not what I do," said I.

And from there I have worked as the managing partner along with Bob to get RP Watkins products direct to the consumer quicker, and in the hands of distribution. Thank you for your support as we continue creating products that make ICF easier.

Designed for nominal 2x lumber widths. 1.5" wide products with a little extra for nailing flanges.

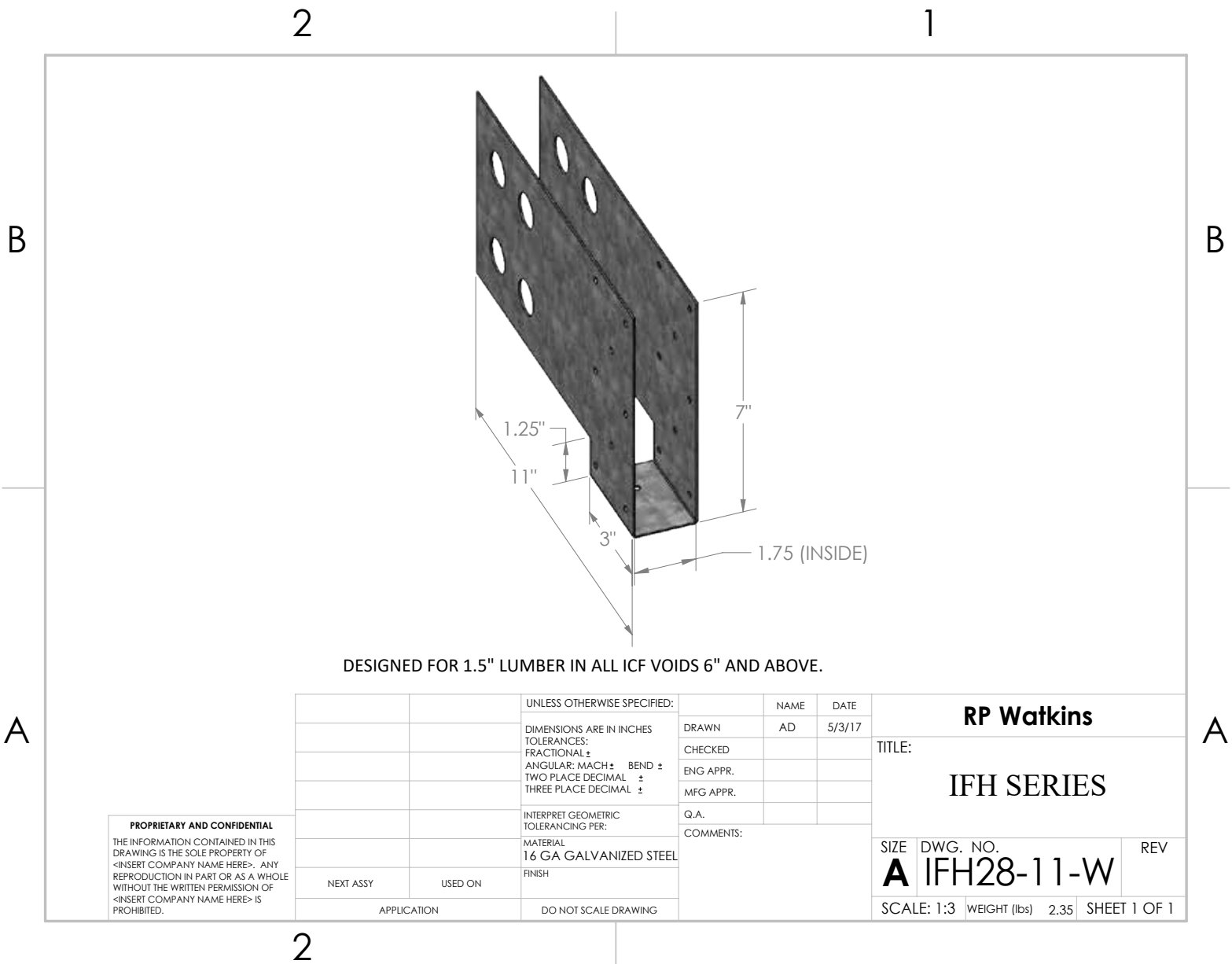
IFH28 Series

IFH2811-B Sold in boxes of 28 (for voids of 6" up)

IFH28-B Sold in Boxes of 28 (for voids of 5.5" and down)

IFH2811-45B Sold with 4 left and 4 right 45 angle





Specifications

- 16g** Gauge
- 2062 lbs** Load capacity
- G90 Galv.** Steel type
- 69 lbs** Weight
- 16x11x7** Box size

Options (special order)

- Yes** 45 degree
- Yes** Stainless
- Yes** Short version

The IFH28-11B is a box of 28 of our IFH28-11 products designed for 1-1/2" wide products typically nominal lumber like 2"x8", 10", and 12" products. The longer legs are designed for all ICF voids 6" and above.

Made with 16 gauge G-90 coated steel it is perfect for interior or exterior use with moderate exposures.

Stainless options are custom and will take 12-16 days to fulfill.

Can be used in thicker foam forms such as Amvic's 3.30 and Quad-lock's Ultra and Plus panels.

In stock and ready to ship.

We recommend using a barrier between ICQ treated wood and the bracket for optimum life span of both products and screws or nails designed for treated wood.

.....
Designed for 2.5" wide products with a little extra for nailing flanges.
.....

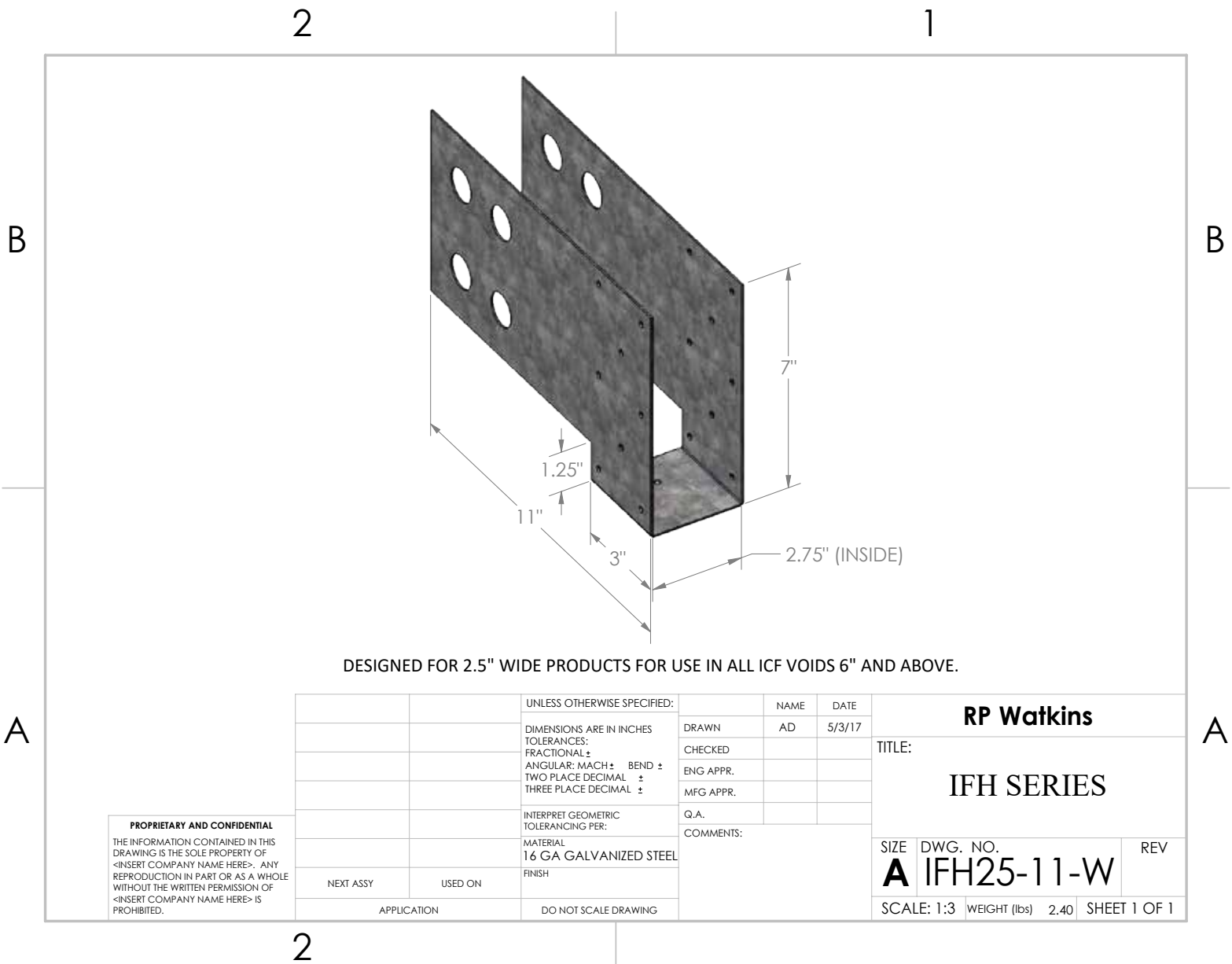
IFH25 Series

.....
IFH2511-B Sold in boxes of 20 (for voids of 6" up)
.....

.....
IFH25-B Sold in Boxes of 20 (for voids of 5.5" and down)
.....

.....
IFH2511-45B Sold with 4 left and 4 right 45 angle
.....





Specifications

- 16g** Gauge
- 2062 lbs** Load capacity
- G90 Galv.** Steel type
- 49 lbs** Weight
- 16x11x7** Box size

Options (special order)

- Yes** 45 degree
- Yes** Stainless
- Yes** Short version

The IFH25-11B is a box of 20 of our IFH25-11 products designed for 2-1/2" truss widths good for all ICF voids 6" and above.

Made with 16 gauge G-90 coated steel it is perfect for interior or exterior use with moderate exposures.

Stainless steel options available for boxed orders. (10- 14 day turn-around)

In stock and ready to ship.

Typical use is *I-Joist and open web wood trusses applications.

.....
Designed for 3.5" wide products with a little extra for nailing flanges.
.....

IFH48

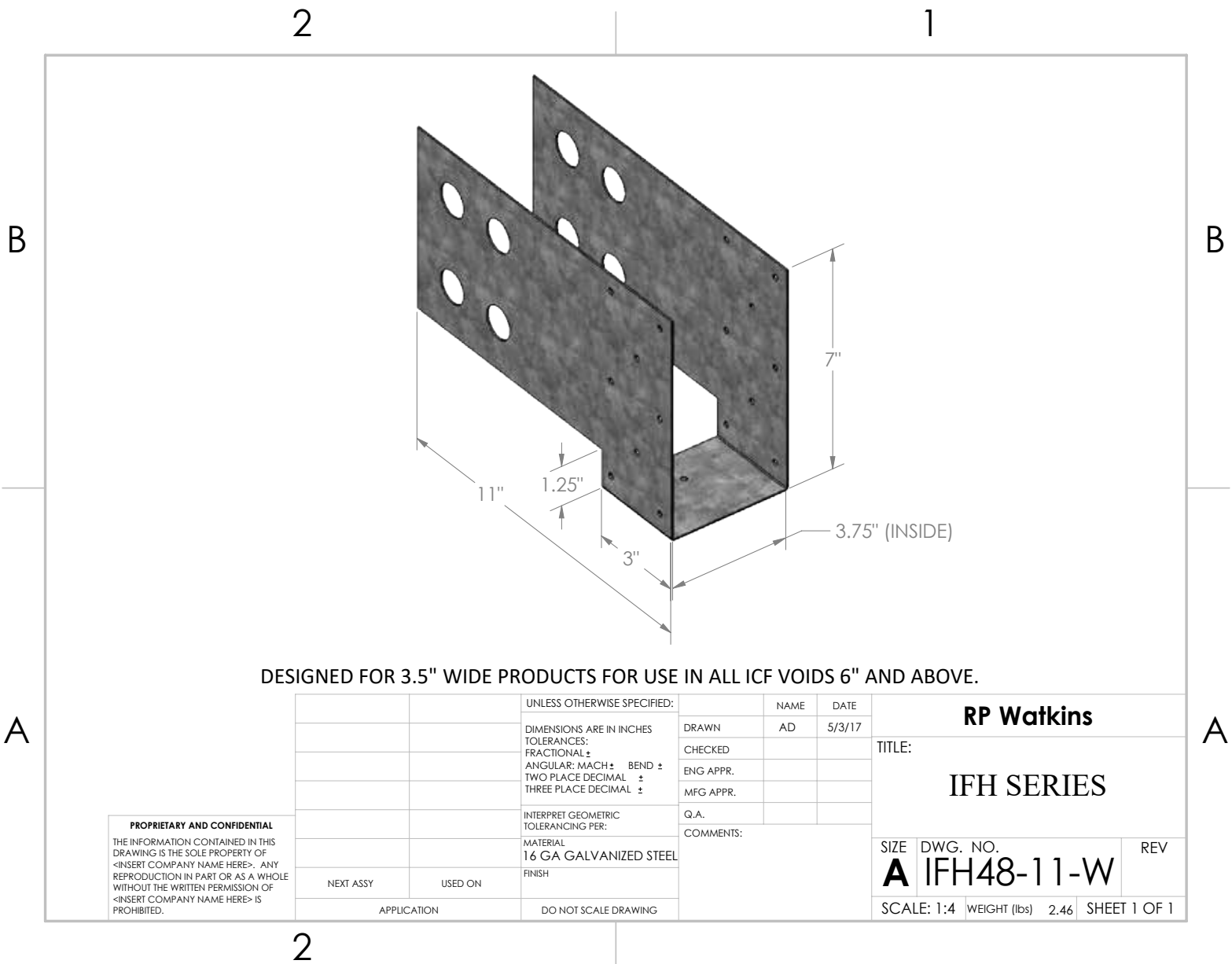
Series

.....
IFH4811-B Sold in boxes of 16 (for voids of 6" up)
.....

.....
IFH48-B Sold in Boxes of 16 (for voids of 5.5" and down)
.....

.....
IFH4811-45B Sold with 2 left and 2 right 45 angle
.....





Specifications

- 16g** Gauge
- 2062** lbs Load capacity
- G90 Galv.** Steel type
- 39 lbs** Weight
- 16x11x7** Box size

Options (special order)

- Yes** 45 degree
- Yes** Stainless
- Yes** Short version

THE IFH48-11B IS 16 OF OUR FLAGSHIP MODEL 3.5" WIDE DESIGNS AND WORKS WITH ALL ICF VOIDS (EXCEPT 4") INCLUDING THICKER FORMS SIDES LIKE AMVIC 3.30 AND OTHERS.

Made from 16GA G90 Steel

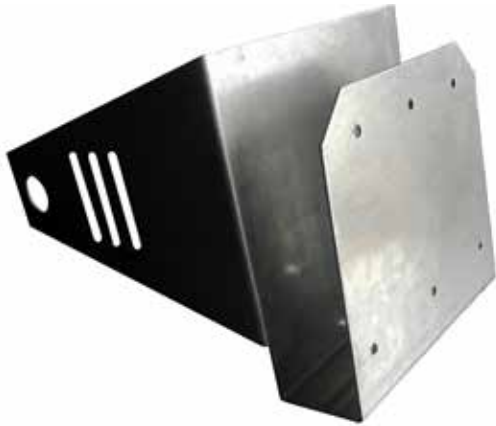
Typical use is *I-Joist and open web wood truss applications.

Stainless Steel options available (14-16 day turnaround)

In stock and ready to ship!

Over 2000 lbs load per bracket

The One Ledge



DL15-11B

1.5" wide for nominal 2x widths

The patent pending OneLedge Series of products are designed for easy one piece wood ledger systems installation. The DL15-11 with it's longer legs fits for voids of 6" or larger and is designed to accept 2x dimensional lumber typically 1-1/2" widths.

6 pcs per box

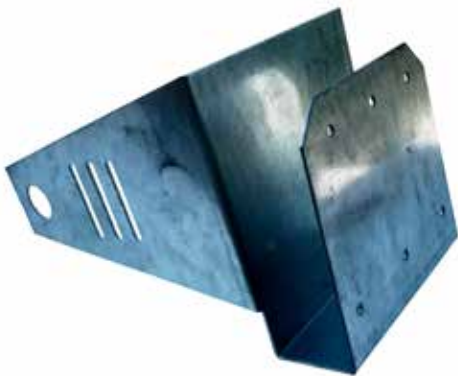


DL15B

1.5" wide for nominal 2x widths

The patent pending OneLedge Series of products are designed for easy one piece wood ledger systems installation. The OneLedge-DL15 with it's shorter legs fits for voids of 5.5" or less and is designed to accept 2x dimensional lumber typically 1-1/2" widths.

6 pcs per box



LV34-11B

1.75" wide for LVL typical widths

The patent pending OneLedge Series of products are designed for easy one piece wood ledger systems installation. The DL15-11 with it's longer legs fits for voids of 6" or larger and is designed to accept 1-3/4" wide composite or glue laminated applications

6 pcs per box



LV34

1.75" wide for LVL typical widths

The patent pending OneLedge Series of products are designed for easy one piece wood ledger systems installation. The OneLedge LV34 with it's shorter legs fits for voids of 5.5" or less and is designed to accept compsite and glue lam beams as ledger boards.

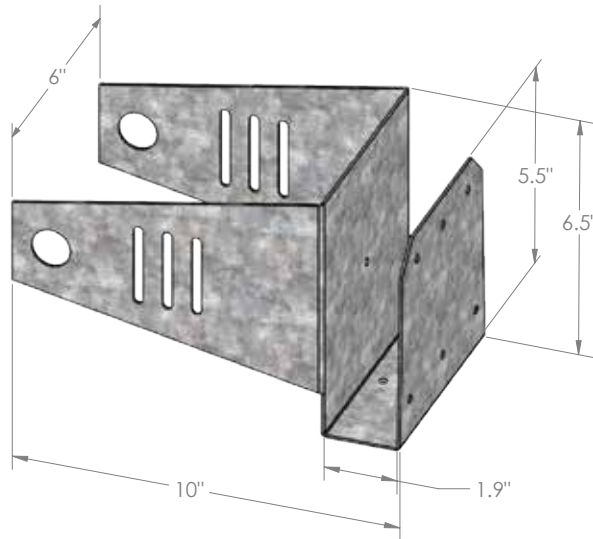
6 pcs per box

2

1

B

B



DESIGNED FOR 1-3/4" LVL PRODUCTS IN VOIDS OF 6" AND ABOVE.

A

A

PROPRIETARY AND CONFIDENTIAL
THE INFORMATION CONTAINED IN THIS DRAWING IS THE SOLE PROPERTY OF <INSERT COMPANY NAME HERE>. ANY REPRODUCTION IN PART OR AS A WHOLE WITHOUT THE WRITTEN PERMISSION OF <INSERT COMPANY NAME HERE> IS PROHIBITED.

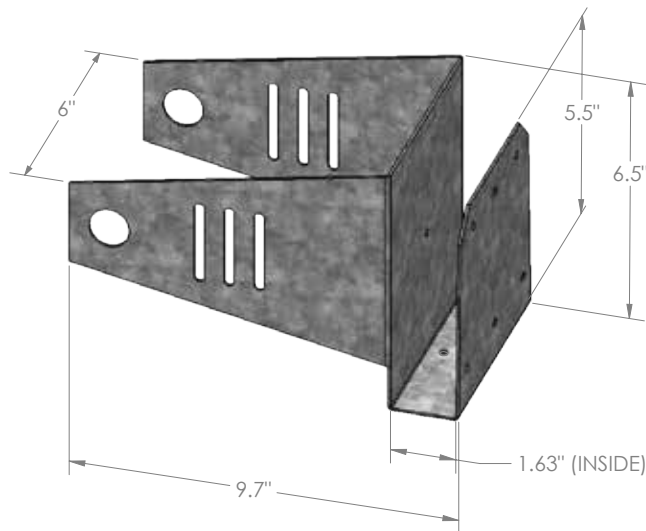
		UNLESS OTHERWISE SPECIFIED:	NAME		DATE		RP Watkins	
		DIMENSIONS ARE IN INCHES	DRAWN	AD	3/16/17		TITLE: OneLedge	
		TOLERANCES:	CHECKED					
		FRACTIONAL: ±	ENG APPR.					
		ANGULAR: MACH ± BEND ±	MFG APPR.					
		TWO PLACE DECIMAL ±	Q.A.					
		THREE PLACE DECIMAL ±	COMMENTS:					
		INTERPRET GEOMETRIC TOLERANCING PER:	SIZE DWG. NO. REV A LV34-11-W					
		MATERIAL						
		14 GA GALVANIZED STEEL	SCALE: 1:3 WEIGHT (lbs) 2.80 SHEET 1 OF 1					
		FINISH						
NEXT ASSY	USED ON							
APPLICATION		DO NOT SCALE DRAWING						

2

1

B

B



DESIGNED FOR 1.5" LUMBER IN ALL ICF VOIDS 6" AND ABOVE.

A

A

PROPRIETARY AND CONFIDENTIAL
THE INFORMATION CONTAINED IN THIS DRAWING IS THE SOLE PROPERTY OF <INSERT COMPANY NAME HERE>. ANY REPRODUCTION IN PART OR AS A WHOLE WITHOUT THE WRITTEN PERMISSION OF <INSERT COMPANY NAME HERE> IS PROHIBITED.

		UNLESS OTHERWISE SPECIFIED:	NAME		DATE	RP Watkins		
		DIMENSIONS ARE IN INCHES	DRAWN	AD	3/16/17	TITLE: OneLedge		
		TOLERANCES:	CHECKED					
		FRACTIONAL: ±	ENG APPR.					
		ANGULAR: MACH ± BEND ±	MFG APPR.					
		TWO PLACE DECIMAL ±						
		THREE PLACE DECIMAL ±				SIZE DWG. NO. REV		
		INTERPRET GEOMETRIC TOLERANCING PER:	Q.A.					
		MATERIAL	COMMENTS:			A DL15-11-W		
		14 GA GALVANIZED STEEL						
		FINISH				SCALE: 1:3 WEIGHT (lbs) 2.77 SHEET 1 OF 1		
NEXT ASSY	USED ON							
APPLICATION		DO NOT SCALE DRAWING						

11

